

Traxda

#905060 Toyota Highlander Installation Instructions

Front

1. Lift truck, place on jack stands or 2 post lift

2. Remove windshield wiper cowl



3. Remove upper strut nuts

4. Remove sway bar links

5. Remove ABS wire guide

6. Remove bolts on lower strut at spindle

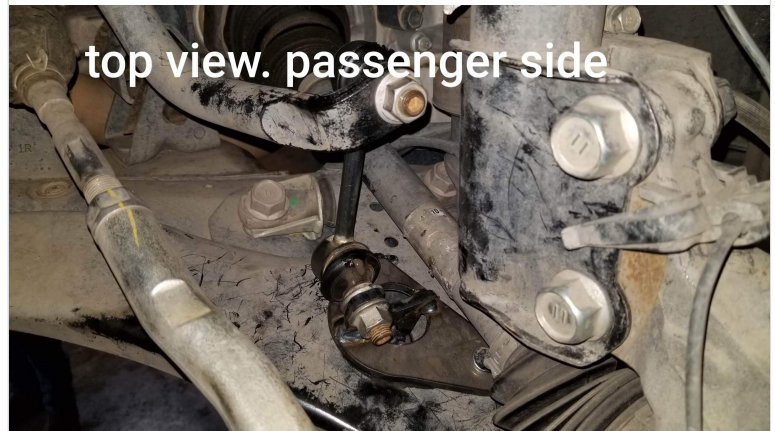
7. Remove strut from vehicle

8. Place Traxda part on strut and bolt on

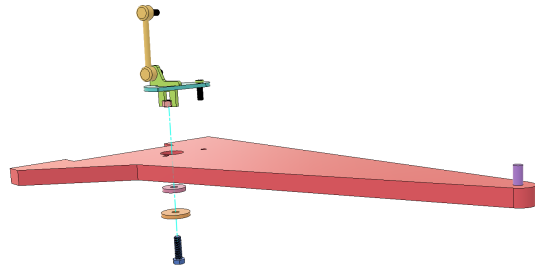



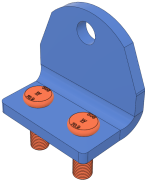
9. Re install strut

10. Install sway bar link mounts onto lower control arm. Pressed in stud acts like a locator pin, **does not get a nut**



11. Install the supplied sway bar links (same as rear) to new mount. The links have a RIGHT and LEFT to them, make sure they are on the correct side.



Rear	
1. Remove 3 nuts holding upper shock	
2. Mark inside lower control arm nut to preserve alignment	
3. Loosen inside control arm bolt	
4. Remove sway bar link bracket at arm	
5. Remove outside control arm bolt and let spring come out	
6. Remove 3 bolts holding spring perch in	
7. Install Traxda part where spring perch was mounted, with spring perch mounted below.	
8. Install Traxda sway bar link mount using supplied 10mm nuts	
9. Install shock bracket	
10. Re install spring and reattach control arm bolt	
11. Re install shock	
ALIGNMENT	Align to stock settings. May need camber bolt kit for front.