



TRAXDA

Lift Kits - Made in USA

SAFETY WARNING!

Always use the correct tools, and wear safety goggles. We STRONGLY recommend installation by a licensed mechanic on a properly secured locking lift.

TIRE FITMENT ADVICE.

The best way to ensure proper tire fitment is to install the kit before purchasing your wheels and tires. Always test fit tires and wheels before purchasing.

VEHICLE RIDE WARNING!

Trucks with lift or level kits installed have a higher center of gravity. Aggressive and sudden direction changes may cause a tip over.

Installation Tips.

Always use caution handling ABS or wheel sensor wiring. Avoid tension of any kind on wiring harness as this may cause damage or failure.

1. Trucks are often not level side to side from the factory. Please measure before installation and note the measurements below.
2. Re-torque all hardware to manufacturers specifications.
3. When aligning, to get the best tire wear use our supplied specifications. OEM specifications are for trucks with stock wheels and tires. Larger tires will wear differently.
4. All instructions are written with vehicle on a 2-post lift with tires removed.

Alignment Notes.

We recommend that a technician with experience doing alignments on lifted trucks perform the alignment. Large tires wear differently than OEM sized tires. Always do an alignment after changing tires on a vehicle.

Ride Height Chart

Driver Front:

Stock height

Lifted height

Driver Rear:

Stock height

Lifted height

Pass. Front:

Stock height

Lifted height

Pass. Rear:

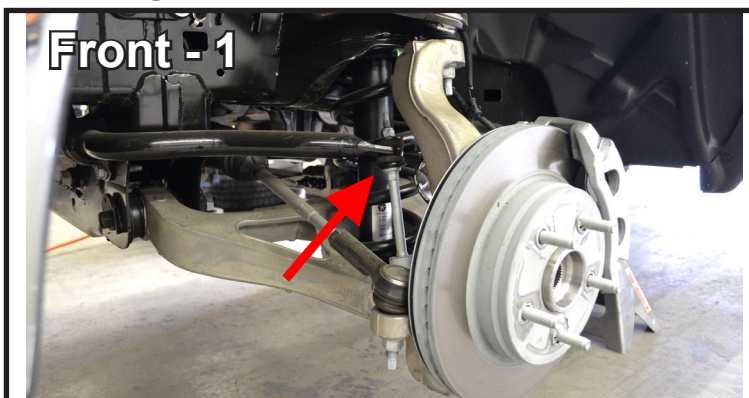
Stock height

Lifted height

Installation Instructions - Kit # 604082 - Dodge Ram 1500 2WD Lift Kit



Please note the two type of spacers - on the left is the Front Spacer, on the right is the Rear Spacer.



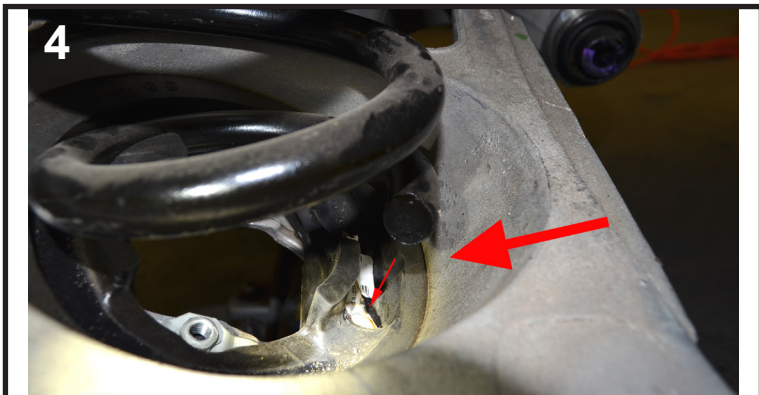
Raise the truck with a jack and place on jack stands at the chassis. Remove front wheels and tires. Disconnect sway bar links at sway bar on both sides.



Remove both front shocks. Working one side at a time, support Lower Control Arm (LCA) and remove mounting cam bolts at frame (mark the cam location first)



Lower the LCA with floor jack until the spring can be removed. Install Traxda Spacer as shown.



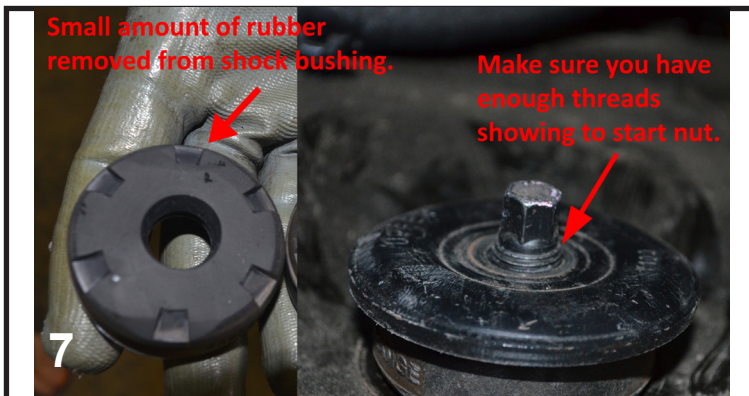
Re-install spring into vehicle and raise the LCA, making sure the spring is properly seated as shown above.



Install cam bolts making sure they are adjusted to their previous position. Repeat steps 2 - 5 on other side of vehicle.



Install the Traxda Shock Spacer as shown above.



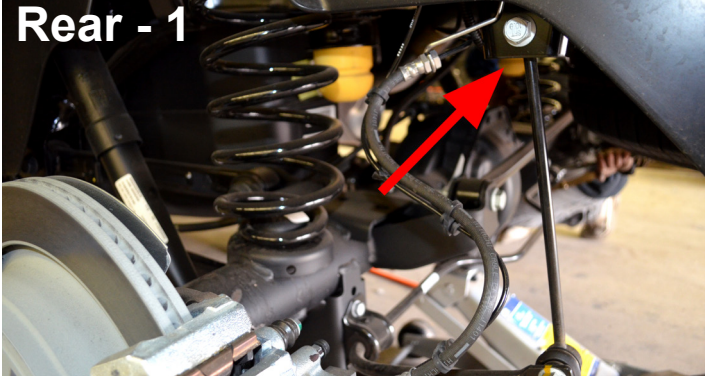
Small amount of rubber removed from shock bushing.

Make sure you have enough threads showing to start nut.

Re-install shocks to the vehicle. You may need to remove a small amount from the rubber bushings to provide enough thread at upper mount to initially tighten.

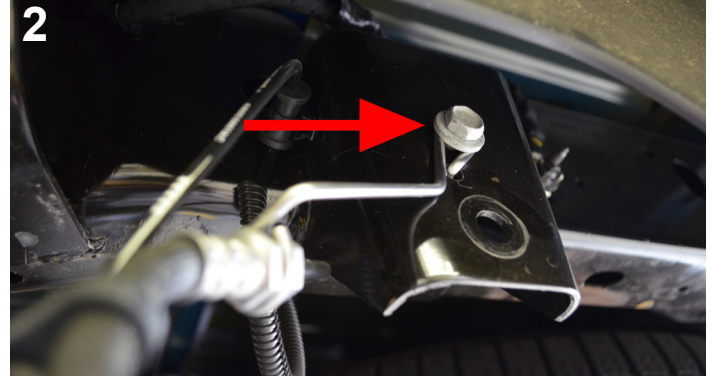
Installation Instructions - Kit # 604082 - Dodge Ram 1500 2WD Lift Kit Ctd.

Rear - 1



Raise the truck with a jack and place on jack stands at the chassis. Remove front wheels and tires. Disconnect sway bar links at sway bar on both sides.

2



Disconnect the brake hose bracket at the frame on both sides.

3



Remove lower shock mounting bolts on both sides and allow the shocks to hang free.

4



Lower the axle until the springs can be removed. Install Traxda Spacers as shown above.

5

Reinstall springs into vehicle. Raise the axle ensuring the Traxda Spacers seat properly against the frame. Reconnect the brake hose brackets, sway bars and finally the lower shock bolts.

6 Torque all hardware to factory settings. Re-check all work, and reinstall wheels. Once back on the ground, have a trained technician perform an alignment.

	Left	Right
Camber	0	0
Caster	+4	+4.5
Total Toe	+1/16"	